

Training Program

# Spring 2024



*"We must teach our children to smell the earth, to taste the rain, to touch the wind, to see things grow, to hear the sun rise and night fall - to care."  
- John Cleal*



*CCR&R is dedicated to enhancing children's lives, with the emphasis on improving the accessibility, affordability and quality of child care, by working together with all families, providers and communities.*



STAY CONNECTED!

**Mailing Address**

700 Logan College Dr.  
Carterville, IL 62918

**Phone**

Local  
618-985-5975  
Toll free  
1-800-548-5563

**E-mail**

[ccrr@jalc.edu](mailto:ccrr@jalc.edu)

**Website**

[www.ccrrjalc.com](http://www.ccrrjalc.com)

**Location**

607 S. Greenbriar Road  
Carterville, IL 62918

**Office Hours**

Mon, Wed, Thurs, Fri  
8:00am – 4:30pm  
**Tuesday**  
10:30am – 4:30pm  
(Hours change during the summer)

# CCR&R Training Policies and Procedures

## Pre-Registration

You must **pre-register** for all trainings. Registrations must be received within seven days of the training date. Last minute registration is permitted if space is available, but materials are not guaranteed. For many trainings there is a **minimum number** of persons that need to be registered for a workshop to be held or the workshop may be cancelled.

**It is essential that your phone number is correct in our system**

## How to Register

⇒ You may register for Gateways training by visiting [www.ilgateways.com](http://www.ilgateways.com) then logging in to your dashboard.

⇒ **Online at [www.ccrjal.com](http://www.ccrjal.com), scroll to the bottom of the page and click on 'Register for Training', scroll through the calendars, click on the training, select the link by 'More Info' and complete the form and click 'Submit'.**

⇒ **If you register for CCR&R training online you will not receive another confirmation until the phone reminder.**

⇒ By phone to Ashleigh Couty at 618-985-5976 X1223

⇒ By emailing Ashleigh Couty at [ashleighcouty@jal.com](mailto:ashleighcouty@jal.com)

⇒ By emailing the Specialist assigned to your program

When registering, each person must register individually. No formal confirmations will be sent before training, however, individuals will be contacted within 48 hours of receipt of registration if the training is FULL and space is no longer available. Registration is on a first come/first serve basis.

As a courtesy, CCR&R sends reminder calls before each training to help participants remember they are registered.

## When CCR&R Needs to Cancel a Training

We make every effort not to cancel trainings; however, some trainings may be cancelled due to:

- \*Low registration, trainer illness, or inclement weather
- \*CCR&R follows JALC policy for inclement weather; if the campus closes, CCR&R is closed.

When a training is cancelled, CCR&R attempts to notify each individual who is pre-registered for training. We will try to give as much notice as possible and reschedule the training at a later date.

## When You Need to Cancel Your Registration

Some training has waiting lists. Please let us know if you are not able to attend training so that someone else can take advantage of this opportunity. Registration fees are only refundable if **cancellation is made five days prior to a training** or if CCR&R cancels.

## Updating Your Information

CCR&R enters all training information into a central database which ensures training is credited properly and recorded on your Professional Development Record.

◆ If you have never attended training with CCR&R before or are not a Registry member, you must become a Registry member before we can register you for training.

◆ It is important to provide us with a **current phone number** and **email address** (if you have one) so we can contact you in case of any changes or cancellations. If there have been recent changes, please complete an Information Update form.

◆ Gateways Registry must be updated yearly.

## Payments

Payments must be received before the training date. *Registration is only complete when your payment has been received.* Registration fees are only refundable if **cancellation is made five days prior to a training** or if CCR&R cancels.

## Late Arrivals / Early Departures

As per our contract with IDHS, **to receive a certificate, a participant must be in attendance the entire length of the training.** A fifteen (15) minute grace period will be given at all training sessions. This grace period begins at the advertised start time. Participants will not be allowed in the training after the 15-minute grace period. **To receive a training certificate, participants must stay until the trainer is finished.**

# Financial Assistance for Individuals

## **CCR&R Individual Professional Development Scholarships**

Individual Professional Development Funds (IPDF) are available through CCR&R to assist individual pursuit of professional development in the field of Early Care and Education and School-age Care. Individuals employed at currently operating legal center and/or home based programs listed on the Child Care Resource & Referral (CCR&R) database are eligible to receive these funds. Funds might be used to help with costs associated with approved workshops, conferences or credentials.

**The deadline for PDF applications is June 1, 2025 or until funds are allocated.**

IPDF funds are designed to be distributed on a first-come, first-serve basis. As applications are received, priority will be given to providers and centers with 50% or more of their enrollment consisting of IDHS funded children and caring for infants and toddlers.



**IPDF Applications are available on the CCR&R website at [www.ccrjalc.com](http://www.ccrjalc.com) or by request at 1-800-548-5563.**

Some upcoming events that are eligible for PDF assistance;  
Some may still be virtual learning.

ILAEYC local or state affiliate sponsored events  
SIECAT sponsored trainings  
ILAEYC Growing Futures Conference  
IL Action for Children's Spring Into Action Conference  
IL Afterschool Network Conference  
McCormick Center for Early Childhood Leadership's,  
Leadership Connections Conference

This list is not inclusive. Please check with Nina at 1-800-548-5563 or [ninawargel@jalc.edu](mailto:ninawargel@jalc.edu) if there is a particular workshop or conference that you are interested in attending to see if CCR&R can lend financial assistance.

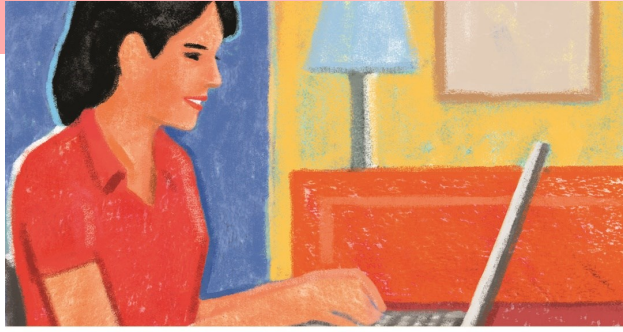
# Financial Assistance for Programs

CCR&R Accreditation Assistance Funds (AAF) are provided through Quality Improvement Funds to support child care centers and family child care programs in achieving accreditation. These funds may be used to help pay fees associated with the accreditation process.

Funds may be awarded to currently operating child care centers/programs and home based child care programs listed on the Child Care Resource & Referral (CCR&R) database. AAF are designed to be a first-come, first-serve process, with priority given to providers with 50% or more of their enrollment consisting of IDHS funded children and caring for infants and toddlers

**The deadline for AAF applications is June 1, 2025, or until funds are allocated.**

QI Fund Applications, and more information on approved activities or expenditures, are available on the CCR&R website at [www.ccrjalc.com](http://www.ccrjalc.com) or can be requested by calling CCR&R at 1-800-548-5563. Application, activity, approval of applications for approved activities, and payment of funds must occur within the same fiscal year.



# Get on track with a Registry membership!

Joining the Gateways to Opportunity® Registry, one of the largest career registries in the state of Illinois, means you are taking an important step in your professional development. Below are tips to help you access the many benefits that the Registry offers. For more information about getting on track with a Registry membership visit [www.ilgateways.com](http://www.ilgateways.com).

## Registry TIP#1

### Log In

To log into your Registry Membership visit [registry.ilgateways.com](http://registry.ilgateways.com) and click on the Dashboard Login. If you have forgotten your username or password use the red links on the login page to have that information emailed to you.

## Registry TIP#2

### Print your PDR and Membership Card

Log In To log into your Registry Membership visit [registry.ilgateways.com](http://registry.ilgateways.com) and click on the Dashboard Login. If you have forgotten your username or password use the red links on the login page to have that information emailed to you. Print your PDR and Membership Card Once you have logged in as a member, click My Registry to enter your Registry Portal and choose the Plan section. Next click the Reports section and then select Get My PDR to print your Professional Development Record. Make sure to choose a start and end date using the correct date format. Or to print your Membership ID Card, choose Reports in the gold bar above the words Professional Development Record. Finally, choose Get Card to access and print your Registry Membership ID Card.

For easy step-by-step instructions, follow along with the Gateways Hot Topic video to print your *Professional Development Record and Membership ID Card*.

Hint: Take a photo of your Membership Card and keep this on your phone so you will always have your Registry Member ID when signing into trainings. Also if you are printing your PDR for a DCFS licensing visit, choose the start and end date of your licensing renewal. DCFS accepts training from Section 3, 4 and 5 of your PDR as documentation of pre-service and in-service training. No additional certificates are needed.

## Registry TIP#3

### Access Free Online Training

Membership in the Gateways Registry allows access to many free online trainings offered through i-learning. Don't miss the chance to take DCFS and CCAP required trainings, or trainings for ExceleRate Illinois and more by using your same Registry login and password to log into i-learning. Find more information about online trainings at <https://courses.inccrra.org/>.

## Registry TIP#4

### Take Advantage of Free Registry Programs

Request a Professional Development Advisor (PDA). Our PDA services can help you set career goals and explore your options in the field, as well as get on track to earn a college degree, complete a Gateways Credential, and more. Click the link below to request a Professional Development Advisor today! [www.research.net/r/requestforPDAsurvey](http://www.research.net/r/requestforPDAsurvey)

Get a Basic Transcript Review (BTR), which sorts your college coursework into four different categories. The BTR is completed on all official transcripts received by the Gateways Registry. Official transcripts are those sealed in an envelope and sent from an accredited college or university.

Upon completion of the review, your formal education will be reflected on your Professional Development Record (PDR) in sections 1 and 2.

# Gateways to Opportunities

*Gateways to Opportunity is a statewide professional development support system designed to provide guidance, encouragement, and recognition to individuals and programs serving children, youth, and families.*

*Learn more at [www.ilgateways.com](http://www.ilgateways.com)*

## **Gateways to Opportunity Credentials**

Gateways Credentials are symbols of professional achievement that validate knowledge and skills, experience, and contributions in early care and education, infants and toddlers, and/or administration.

Gateways credentials are awarded and recognized by the Illinois Department of Human Services (IDHS) Bureau of Child Care and Development. Gateways offers a variety of credentials to professionals in the field of early care and education, school-age, youth development, family child care, technical assistance, and family specialist.

Credentials can be obtained in a variety of ways. Contact CCR&R at 1-800-548-5563 to learn more.

# LOÖK

First time & Renewal  
Applications are  
**FREE**  
for a limited time!

## **Scholarship Program**



*If you work in a licensed child care center or licensed family/group home, the Gateways to Opportunity Scholarship program may help pay for you to go to college.*

The Gateways Scholarship Program is now accepting applications!

This program can pay for up to 100% of college tuition for courses and degrees in ECE/Child Development.

For more information, or to check out the eligibility requirements, visit the Gateways website at <http://www.ilgateways.com/financial-opportunities/scholarship>.

**CHANGES  
ARE HERE!**

You may now qualify for

**Great START!**

Get a check every 6 months!

**STARTING JULY 1, 2022**

those making **\$24 an hour** or less **AND** **\$49,920 a year** or less\*  
may qualify for Great START funding.

**If your wages fall within the income limits **APPLY TODAY!****

For more information, visit **[www.ilgateways.com](http://www.ilgateways.com)** and  
**click on Great START** or email **[gstart@inccrra.org](mailto:gstart@inccrra.org)**.

*\*All Great START requirements must be met to qualify.*



1226 Towanda Plaza | Bloomington, Illinois 61701 | Telephone: (866) 697-8278 | [www.ilgateways.com](http://www.ilgateways.com)

Gateways to Opportunity is administered through INCCRRA and funded by the Illinois Department of Human Services Bureau of Child Care and Development and the McCormick Foundation.  
Gateways to Opportunity, the arch logo and Illinois Professional Development System are registered trademarks of INCCRRA.  
PD350© 2022 INCCRRA

## Great START Wage Supplement Scale

Great START is available to Assistants, Teachers, Family Child Care Providers, Family Group Child Care Providers, and Directors who work in programs licensed by the Illinois Department of Children and Family Services.

### Job Category Key

A = Assistant  
 FCC = Family Child Care Provider  
 G = Family Group Provider  
 T = Teacher  
 D = Director

Level	Option	Education	Eligibility <sup>1</sup>	Supp. <sup>2</sup>
1	A	6 semester (9 qtr) hrs in Early Childhood Education (ECE)/Child Development (CD)	A/FCC	\$150
2	A	Child Development Associate (CDA)	A/FCC	\$225
2	B	Certified Childcare Professional (CCP)	A/FCC	\$225
2	C	Montessori Credential (AMS or AMI credentials only)*	A/FCC	\$225
2	D	12 sem hrs (18 qtr) hrs toward a degree (9 sem hrs in ECE/CD)	A/FCC	\$225
2	E	FCC Level 2, SAYD Level 2	A/FCC	\$225
3	A	24 sem (36 qtr) hrs toward an Associates Degree in ECE/CD	A/FCC/G	\$375
3	B	24 sem (36 qtr) hrs related field (9 sem hrs ECE/CD)	A/FCC/G	\$375
3	C	CDA/CCP/Montessori Credential + 12 sem (18 qtr) hrs toward a degree	A/FCC/G/T	\$375
3	D	ECE Level 2, FCC Level 3, SAYD Level 3	A/FCC/G	\$375
4	A	Approved Community College Early Childhood Certificate	A/FCC/G	\$525
4	B	36 sem (54 qtr) hrs toward Associates Degree in ECE/CD	A/FCC/G	\$525
4	C	36 sem (54 qtr) hrs toward a degree in related field (12 sem hrs in ECE/CD)	A/FCC/G	\$525
4	D	ECE Level 3, ITC Level 2, SAYD Level 4	A/FCC/G	\$525
5	A	48 sem (72 qtr) hrs toward Associates Degree in ECE/CD	A/FCC/G	\$675
5	B	48 sem (72 qtr) hrs toward a degree in related field (15 sem hrs in ECE/CD)	A/FCC/G	\$675
5	C	Associates Degree with non ECE/CD major (15 sem (22 qtr) hrs in ECE/CD)	A/FCC/G/T	\$675
5	D	60 sem (90 qtr) hrs toward a degree in unrelated field (15 sem hrs in ECE/CD)	A/FCC/G/T	\$675
5	E	ITC Level 3, FCC Level 4	A/FCC/G/T	\$675
6	A	Associates Degree in ECE/CD	A/FCC/G/T/D	\$825
6	B	Associates Degree in any field with 18 sem (27 qtr) hrs in ECE/CD (21 sem hrs for Dir)	A/FCC/G/T/D	\$825
6	C	60 sem (90 qtr) hrs toward a degree in unrelated field (15 sem hrs in ECE/CD)	A/FCC/G/T/D	\$825
6	D	90 sem (134 qtr) hrs toward a degree in an unrelated field (15 sem hrs in ECE/CD; 21 sem hrs for Dir)	A/FCC/G/T/D	\$825
7	A	72 sem (107 qtr) hrs toward Bachelors Degree in ECE/CD	A/FCC/G/T/D	\$975
7	B	90 sem (134 qtr) hrs toward Bachelors Degree in related field (18 sem hrs in ECE/CD; 21 sem hrs for Dir)	A/FCC/G/T/D	\$975
7	C	Bachelors Degree in unrelated field (18 sem (27 qtr) hrs in ECE/CD; 21 sem hrs for Dir)	A/FCC/G/T/D	\$975
7	D	ECE Level 4	A/FCC/G/T/D	\$975
8	A	90 sem (134 qtr) hrs toward a Bachelors Degree in ECE/CD	A/FCC/G/T/D	\$1200
8	B	Bachelors Degree in related field (24 sem hrs (36 qtr) in ECE/CD)	A/FCC/G/T/D	\$1200
8	C	Bachelors Degree in unrelated field (30 sem hrs (45qtr) in ECE/CD)	A/FCC/G/T/D	\$1200
8	D	ITC Level 4, SAYD Level 5, IDC Level I	A/FCC/G/T/D	\$1200
9	A	Bachelors Degree in ECE/CD	A/FCC/G/T/D	\$1,575
9	B	Masters Degree in unrelated field (30 sem (45 qtr) hrs in ECE/CD)	A/FCC/G/T/D	\$1,575
9	C	FCC Level 5	A/FCC/G/T/D	\$1,575
10	A	Masters Degree in ECE/CD, ECE Level 5, IDC Level II, ITC Level 5	A/FCC/G/T/D	\$1,950
10	B	IDC III, ECE Level 6, ITC Level 6	A/FCC/G/T/D	\$1,950

1. A person is only eligible at a level if their job category is shown in the "Eligibility" column. A person will only be eligible at a level if they meet the educational requirements listed at that level.

2. Wage supplements are paid and shown in 6-month increments. Wage Supplements will be pro-rated if you work 15-29 hours per week. Practitioner must remain employed at same child care program to receive 6-month renewal supplement.

\*Montessori credentials from American Montessori Society or Association Montessori International.

All ECE/CD courses must be passed with a "C" or higher.

Credentials other than those listed may be evaluated to determine eligibility as it applies to your current position.

Foreign transcripts must be evaluated by an evaluation service. The Great START office can assist you in locating one of these services.

# Ongoing Learning Opportunities

CCR&R facilitates meetings for Center Directors, Assistant Directors, Owners and Head Start Administrators.

Topics and meeting site will vary each month.

## Benefits of Participating-

- **Support, Networking & Sharing** with others who do the same work as you!
- Be **'In the know'** with support from your local **CCR&R Quality Team!**
- Visit area programs and get **NEW IDEAS** to bring back to your program!  
**Learn** with others who know what it's like in your world!

*Meeting schedule will be coming soon.*

## Network - Share - Support

The Quality Team can provide ongoing learning opportunities for you and your staff suited to your needs. In addition they provide coaching to help ensure what is learned, sticks! Reach out to a Specialist today to schedule an in-person visit so you can work together to find the right approach that meets your needs.

**Quality Specialist - Nina Wargel**

**Infant Toddler Child Care Specialist - Chrissy Confer**

**Professional Development Coordinator - Ashleigh Couty**

Looking for other types of ongoing support, visit our website to find a variety of entities that support early childhood educators through professional development everyday.

**Go to [www.ccrjalc.com](http://www.ccrjalc.com), click on Providers, scroll down to Online learning and more!**






## FAMILY CHILD CARE ASSOCIATION OF SOUTHERN ILLINOIS

The Association is open to **ANYONE** who is interested and able to attend. You can attend one meeting or attend every month!

**Support, Network and Share** with others who do the same work as you!  
**Learn** with others who know what being a Family Child Care Home Owner is like.

Meetings take place on the 3rd Tuesday of every month from 6:30-8:30 pm

Contact Kim Hutchcraft  618-927-9624





## The SIECAT MISSION

To promote, support and enhance the quality of early care and education for children and families in Southern Illinois.

**Our members currently serve over 4,000 children from ISBE PreK/CCR&R's/ Child Care/Consultants.**

## WHY JOIN?

- Keep abreast of current issues and trends.
- Share ideas & solutions with seasoned educators.
- Be involved with statewide advocacy efforts.
- Receive free Gateway Registry training opportunities.
- Improve the quality of your early childhood services.
- Network with other early childhood professionals.

### ***Our members are currently active in:***

GOEC Advisory Committees  
Illinois Action for Children  
IDHS Advisory Council  
DCFS Advisory Council  
NAEYC/IAEYC/SIAEYC  
Advisory Boards  
for John A. Logan College  
Kaskaskia College  
Illinois Trainers  
Network Committee  
Illinois School-Age  
Childcare Network Board  
NAEYC Validation  
Project Child Resource  
& Referral Agency  
Children's Home  
& Aid Resource  
& Referral Agency  
John A. Logan Resource  
& Referral Agency

Faculty National Louis  
University, John A. Logan, SWIC  
Wabash Valley College





## **MONTHLY MEETINGS**

We meet the second Thursday of each month  
(except December) from 10:00 a.m. - 12:00 p.m.  
at **Rend Lake Marketplace, Mt. Vernon, IL**  
or via **Zoom**

## **MEMBERSHIP REQUIREMENTS**

Membership dues are \$50.00 annually  
and is open to **Professionals**  
**in Early Childhood Education**

Attendance of monthly meetings is encouraged.

## **GATEWAY REGISTRY APPROVED TRAININGS**

For more information, call:  
Dr. Jill Andrews, President  
(618) 847-7102



# What is Infant/Early Childhood Mental Health Consultation?

Infant/Early Childhood Mental Health Consultation (I/ECMHC) is a prevention-based approach that pairs [an infant/early childhood] mental health consultant with adults who work with infants and young children in the different settings where they learn and grow, such as child care, preschool, home visiting, [Early/Head Start,] and early intervention. Mental health consultation is not about behavior modification. Nor is it therapy. Mental health consultation equips caregivers to facilitate children's healthy social and emotional development.

— Center of Excellence for Infant and Early Childhood Mental Health Consultation at Georgetown University

Caregiver Connections  
Intake Coordinator  
217.592.0389

[caregiverconnections.org](http://caregiverconnections.org)

[bit.ly/IL-IECMHC](http://bit.ly/IL-IECMHC)

#### Scan the QR code

- Open the camera app
- Focus the camera on the QR code by gently tapping the code
- Follow the instructions on the screen to complete the action



## What I/ECMHC is?

**PROMOTION/  
PREVENTION FOCUSED**  
Accessing support  
before a crisis



**INDIRECT**  
Primarily working with  
program staff



**RELATIONSHIP-BASED**  
Working in collaboration  
with program staff



**CAPACITY BUILDING**  
Helping staff and administrators  
to build self-efficacy



**BIG PICTURE**  
Exploring common themes  
across the program



## What I/ECMHC is NOT?



**THERAPY**  
Providing clinical  
treatment



**“FIXING THE CHILD”**  
Creating a behavioral  
modification plan



**COACHING**  
Supporting the goals of  
the learner



**SUPERVISION**  
Monitoring and managing  
staff performance



**SOCIAL WORK**  
Managing family cases  
and referrals to resources

## How can I/ECMHC support my program?

I/ECMH Consultants provide an opportunity for reflection with administrators, supervisors, and early childhood professionals. This interaction allows all staff to think through their work with a mental health-oriented person, go deeper into a situation, explore options, validate your experience, and come up with the strategies needed to take next steps. I/ECMHC is NOT an expert giving advice to the members on your team. It is a collaboration, with all involved sharing their thoughts and working together towards solutions.

## What are the benefits of I/ECMHC?

### ...for Infants and Young Children



Improved social skills



Improved emotional functioning



Reduced challenging behaviors



Reduced suspensions and expulsions

### ...for Families, Educators, and Home Visitors



Improved child-adult relationships



Reduced provider stress



Reduced provider burnout



Reduced provider turnover

**“Nearly 40% of ECEC programs that have excluded at least one child from their early learning program has never heard of mental health consultation.”**

—Kate Zinsser, PhD, University of Illinois at Chicago

“Prior to contacting Action for Children, I did not have the resources to refer parents who needed additional support outside of my daycare setting. The consultant shared with me and the parents, organizations which could offer further support, such as family counseling. Having a Mental Health Consultant was also beneficial because after she conducted her own child observation, I was able to share my experience with her, and learn more about how I could support the child when he became aggressive. Having the MHC meet with me and the child’s mother and father was extremely helpful because I felt much more confident about what I was talking about, and because I knew she would be able to answer some of the questions the parents had, which perhaps I might of not been able to answer, had she not been there.”

— Early Childhood Professional

## Where do I find an Infant/Early Childhood Mental Health Consultant?

As a child care professional you can access FREE Infant/Early Childhood Mental Health Consultation in your community! To request training, technical assistance or Mental Health Consultation please visit the Caregiver Connections website at [caregiverconnections.org](http://caregiverconnections.org) or call 217.592.0389 to connect with a consultant in your community.

# CCR&R Training

CCR&R contracts with the Illinois Department of Human Services to provide training and technical assistance to the early childhood professional community. **CCR&R's training is planned around the results of ongoing feedback from professionals throughout the year**, as well as current trends and field focus. Training helps support your work towards continuous quality improvement. You will notice that training is offered in a variety of formats; in-person, virtual, evenings, weekends, series, learning groups, etc. If you are in need of a specific training topic for your staff, please contact CCR&R to explore the possibility of getting a topic added to our calendar or scheduling an on-site training for your group.

## Bi-annual Training Survey

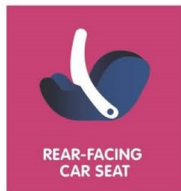
In accordance with our contract **CCR&R must utilize an ongoing Training Needs Assessment Survey requesting feedback on desired training and technical assistance topics.**

Your feedback and ideas are critical to helping CCR&R meet your professional development needs. If there is something specific you are looking for, please feel free to contact us at any time and we will do our best to respond to your request. We appreciate the opportunity to serve and support early childhood professionals in southern Illinois and the important work they do each day in caring for and teaching young children.

Our training needs survey will be available on our website later in the fall. Please watch for an announcement. *We would appreciate you and your staff completing the survey.*

# Car Seat Safety Checks

## **FREE** **CAR SEAT INSPECTION** @CCR&R



**CHRISSY CONFER**, certified car seat safety technician, will provide an opportunity for parents and caregivers to learn about child passenger safety and have their car seats checked for proper use and installation.

**To make an appointment call 618-985-5976 ext. 1242**

- Car seat checks take approximately 30 minutes.
- Please,bring your car seat, the vehicle owner's manual, and the car seat instruction manual to your appointment.



# CPR, First Aid and AED Training

## Heartsaver Pediatric First Aid CPR AED

### ***In-person:***

CCR&R offers CPR and First Aid year round at the three community colleges in our district. We offer classes at least once each month and add classes to meet the need. We pay for all fees if the class is scheduled with CCR&R and is taken at one of the following colleges.

**John A Logan      Shawnee College      Southeastern Illinois College**

If you are having trouble locating First Aid and CPR training, please contact Child Care Resource and Referral for assistance.

### Approved CPR and First Aid Providers

AMERICAN HEART ASSOCIATION  
AMERICAN SAFETY & HEALTH INSTITUTE (ASHI)  
AMERICAN RED CROSS  
AMERICAN TRAUMA EVENT MANAGEMENT (ATEM)  
EMERGENCY CARE AND SAFETY INSTITUTE (ECSI)  
EDWARD ATKINSON/EMERGENCY RESPONSE HEALTH NETWORK  
ELLIS & ASSOCIATES, INC.  
EMS SAFETY SERVICES  
KNOW CPR  
MEDIC FIRST AID  
NATIONAL SAFETY COUNCIL  
R.H. SANDERS/TITAN CPR  
PACIFIC MEDICAL TRAINING  
PRO-TRAININGS, LLC

#### **HELPFUL TIPS**

- We suggest that you take a class organized by CCR&R so you know that you are getting what you need and it is automatically reported to the Gateways Registry
- Be sure that you are taking a Pediatric CPR and First Aid class (if you aren't sure, give us a call)

*If you will be asking for reimbursement and you take a class that is not offered by CCR&R, hold on to your receipt to show that you paid for the class.*

### Paying for CPR and First Aid

When you take a face to face class at a local college campus, it is FREE with no fees. Child Care Resource and Referral will pay for CCAP providers (includes all staff) to take these classes.

When a program schedules training for their staff at their site, the program is responsible for payment. Funds are available to cover part of this cost by reimbursement.

JALC no longer schedules CPR Classes off campus.

If you schedule your own CPR/First Aid course from a different approved provider or agency, you can apply for reimbursement. Contact Nina Wargel at CCR&R to request an application or access the CPR/First Aid Reimbursement form on our website under Child Care Center and Family Home Providers, Grants and Funding.

# CPR, First Aid and AED Training

The CPR, First Aid and AED course teaches you how to manage illness and injuries in a child, in the first few minutes, until professional help arrives. This course is for those involved in child care that have a duty to respond to a first aid emergency because of job responsibilities or regulatory requirements. This course is tailored to child care providers, child care teachers and staff, babysitters, grandparents, foster and adoption parents, pre-kindergarten, elementary and secondary school teachers, camp counselors, youth organizations, and coaches for children's sports organizations.

## John A Logan College - Carterville

### Date/Time/Place

Saturday, January 13

9:00-4:30

H 132

Saturday, February 10

9:00-4:30

H 132

Saturday, March 23

9:00-4:30

H 132

Saturday, April 6

9:00-4:30

H 132

Saturday, May 4

9:00-4:30

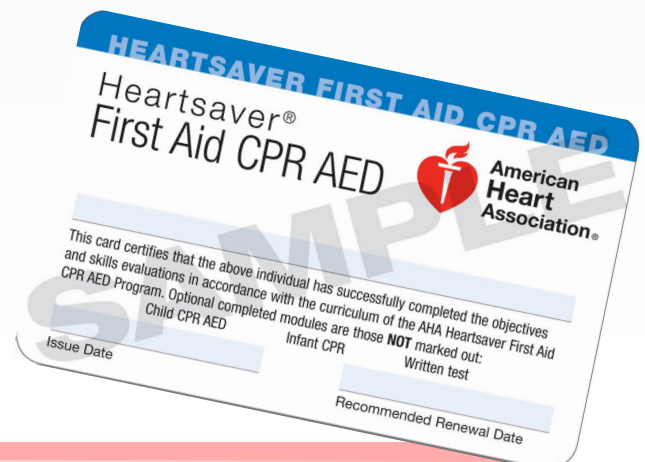
H 132

### Class Information

A short lunch break will be given between CPR and First Aid sessions.

Please be on time and bring something to write with.

Additional classes may be added throughout the year depending on need.





# CPR, First Aid and AED Training

## Shawnee Community College - Ullin

### Date/Time/Place

Date to be announced  
8:30-4:30  
J 1024

### Class Information

Lunch break is short so please bring your lunch.  
  
Please be on time and bring something to write with.

## Southeastern Illinois College - Harrisburg

### Date/Time/Place

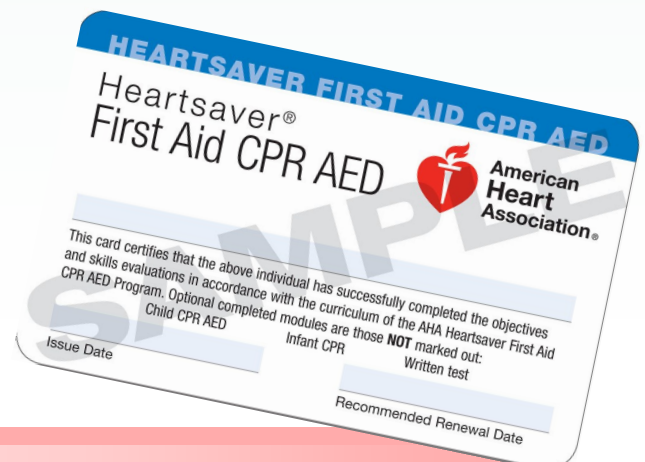
Saturday, April 13  
8:00-4:30  
G 205

### Class Information

Lunch break is short so please bring your lunch.  
  
Please be on time and bring something to write with.

If you arrive more than 15 minutes late, you will not be allowed to enter the classroom.

**CPR and First Aid cards will be issued via email using the address given to the Instructor during class.** Cards are typically issued within one week of the training.





# AHAeCARDS

TRAINING. QUALITY. SECURITY.



## How to Claim Your AHA eCard

Congratulations on completing your AHA course! One last step will make it official—**claiming your eCard**. As a reminder, only you can claim your eCard at this time; it cannot be claimed by someone on your behalf.

Please follow these instructions to claim your eCard:

- 1** You will receive an email from [ecards@heart.org](mailto:ecards@heart.org) with a link inviting you to claim your eCard online.  
*If you do not receive this email, please check your Spam or Junk folders prior to alerting your Training Center or Instructor. To try to prevent the email from being marked as Spam or Junk, please add the email address, [ecards@heart.org](mailto:ecards@heart.org), to your Address Book or Contacts in your email server.*
- 2** The link within the email will direct you to the Student Profile webpage, which will be prepopulated with your first name, last name, email address, eCard code, AHA Instructor name, and Training Center information. Adding your phone number is optional.  
*Please check that this information is correct. If it is not, please contact the Training Center directly.*
- 3** Once you have confirmed that your information is accurate, you will set up a security question and answer to access your eCard(s) in the future.
- 4** After setting up your security question and answer, accept the terms and conditions of the site and click "Submit."
- 5** You will be directed to fill out a brief survey about the AHA course you just completed. Your answers to these questions will help improve the quality of future AHA trainings.
- 6** After you complete the survey, your eCard will be displayed. You will have 3 options to view or print it:
  - Save as PDF:** Upon choosing your preferred size to view, you can save your eCard to your computer for future use.
  - QR Code:** For students with a QR code reader, you can access your eCard on a mobile device as needed.
  - Printing:** Your eCard can be viewed as a PDF and can be printed either wallet size (2.5" x 3.5") to be cut out or full size (8.5" x 11") for easy filing.

**Please note that if you do not claim your eCard, you will not be able to show proof of course completion to your employer.** If your employer requires proof of completion, you can email them a copy from the eCard landing page.

After you have accessed your eCard, you will receive an email from the AHA confirming that your eCard has been claimed. You should save this confirmation email for your records.

You can view your eCard online through the AHA's website, [www.heart.org/cpr/mycards](http://www.heart.org/cpr/mycards), at any time. Simply enter your first and last name and email address, or the eCard code found on your eCard.

Your employer can verify your eCard at [www.heart.org/cpr/mycards](http://www.heart.org/cpr/mycards) to confirm issuance by a valid Training Center and Instructor aligned with that Training Center. **Employers are only able to verify your card if you have completed steps 1-5.**

# Training Opportunities (listed by date)

***We will be offering training in-person and via Zoom this Spring.***

***We know virtual training feels very different than face-to-face training. Our team of trainers will do their best to ensure that everyone has a successful experience. In order for you to be prepared, you must at least ensure that you have the Zoom app downloaded onto any device (cell phone, tablet, laptop, desktop) before the day of the training. If you need assistance, please call our office and someone will be able to help you.***

***Be sure your email address and phone number are up to date in the Gateways Registry. The link to your session will be sent via the email on file in the Registry.***

## ***An Introduction to ERS***

***Mon., Feb. 5 / 5:30-9:30***

***SIC Heritage Room / \$10***

***Nina Wargel, Quality Specialist***

*This training is for center-based programs and family child care providers and offers an overview of the*

*Environment Rating Scales. The Environment Rating Scales are user-friendly assessment tools that measure the quality of the learning environment for infants through school-age children. After completing this training, participants will be able to use the tool(s) for program self-assessment and improvement planning.*



## ***Choosy Eaters Can Become Healthy Eaters***

***Tues., Feb. 6 / 6:30-8:30 / CCR&R / FREE***  
***Toni Kay Wright, U of I Extension Educator***

*Identify strategies that can be used in the classroom to overcome choosy eating. Many children rely on early childcare centers for meals and nutrition education; however only 1 in 5 children eats the recommended servings of fruits and vegetables each day. Young children are developing their food preferences that will last a lifetime. Join us to*

*learn how to encourage children to try new foods and how to offer foods repeatedly to shape healthy eaters.*

# Training Opportunities (listed by date)

## **Program for Infant Toddler Care**

**\*MUST ATTEND BOTH SESSIONS for credit  
(this class is also a requirement to renew your  
Infant/Toddler Credential)**

**Thurs., Feb. 15 / 5:30-8:30**

**Thurs., Feb. 29 / 5:30-8:30**

**CCR&R / FREE**

**Chrissy Confer, Infant-Toddler Specialist**

*Social-Emotional Growth and Socialization explores topics on social-emotional development in the first three years, temperaments of children and caregivers, socialization, guidance and discipline, environments, and gaining an understanding of children's behavior. Training will begin with an overview of the basic concepts of early social-emotional growth and socialization and their application to the group care context. An emphasis is placed on the development of a nurturing relationship between the infant and caregiver. The overview addresses the importance of responsive caregiving, the individualization of care through an understanding of infant temperament, the critical role of family and culture in early identity development, exploring developmentally appropriate play strategies with ages of infancy, creating supportive physical environments, and stages of emotional development.*



## **Getting Ready for K: Self Help and Motor Skills**

**Thurs., Feb. 22 / 6:30-8:30 / CCR&R / FREE**

**Colleen McLaughlin, ECE Consultant**

*In 2023, The Southern Illinois Coalition for Children and Families shared a Kindergarten Readiness checklist throughout the region. Developed with the help of both local Pre-K and Kindergarten teachers, the checklist is designed to convey one consistent message about what skills are important when entering Kindergarten. We will dig into the checklist in a series of sessions. This session will focus on fine motor and self-help skills.*



# Training Opportunities (listed by date)

## **Brain Architecture Game**

**Tues., Feb. 27 / 6:30-8:30 / CCR&R / FREE**

**Robin Ridgely, U of I Extension Educator**

*The Brain Architecture Game is a tabletop game experience that builds understanding of the powerful role of experiences on early brain development - what promotes it, what derails it, and with what consequences for society. The game helps people appreciate the impact of early childhood experiences on outcomes across their lifespan. Attendees will leave with an understanding that the architecture of the brain is built starting in the earliest years of life, and that experiences shape the structure for better or worse.*



## **Motivated By Movement!**

**Thurs., Mar. 7 / 6:30-8:30 / CCR&R / FREE**

**Toni Kay Wright, U of I Extension Educator**

*Actively engaging in physical activity at a childcare setting is essential for a child's growth and development. Better understand the importance of physical activity, learn innovative strategies for staff and child engagement during indoor and outdoor play and share creative approaches for indoor activity.*

## **An Introduction to ERS**

**\*MUST ATTEND BOTH SESSIONS**

**Tues., Mar. 12 / 6:00-8:00**

**Thurs., Mar. 14 / 6:00-8:00**

**CCR&R / \$10**

**Chrissy Confer, Infant-Toddler Specialist**

*This training is for center-based programs and family child care providers and offers an overview of the Environment Rating Scales. The Environment Rating Scales are user-friendly assessment tools that measure the quality of the learning environment for infants through school-age children. After completing this training, participants will be able to use the tool(s) for program self-assessment and improvement planning.*



# Training Opportunities (listed by date)

## **Perinatal Mental Health For Teachers AND Families**

**Wed., Mar. 13 / 6:00-8:00 / ZOOM / FREE**

**Rachel Chruszczyk, Prevent Child Abuse IL**



*Join our enlightening workshop on perinatal mental health, designed for professionals and parents. This workshop provides comprehensive insights into perinatal mood disorders, their impact on individuals and families, and effective prevention and community care strategies. You will explore the fundamentals, signs, and symptoms of perinatal mood disorders, their connection to child mistreatment, and research-based interventions to promote healthy parent-child relationships. Learn about early identification, screening tools, and the role of professionals and support networks in fostering resilience to promote perinatal mental health and to provide vital support for affected individuals.*



## **Warning I Bite!**

**Tues., Mar. 19 / 6:30-8:30 / SIC / FREE**

**Chrissy Confer, Infant-Toddler Specialist**

*Did you ever think you would say, "Eat your food not your friends?" Biting is common for infants toddlers and 2-year-olds. It can even happen in preschool. Biting can be frustrating and upsetting. Almost every teacher will face this behavior. Participants will learn why children bite and develop strategies to respond appropriately. We will discuss positive guidance, shadowing techniques and effective classroom management.*

## **Nature Observations**

**Thurs., Mar. 21 / 6:00-8:00 / CCR&R / FREE**

**Nancy Gulley, ECE Consultant**

*Come explore all the wonders that nature has to offer! Learn how nature offers the opportunity for exploration and wonder to preschool children, as they learn how to focus and observe details in nature. Participants will examine the power of observation through nature materials themselves and learn how careful observation and journaling, can lead to wonder and excitement of learning across multiple learning domains.*



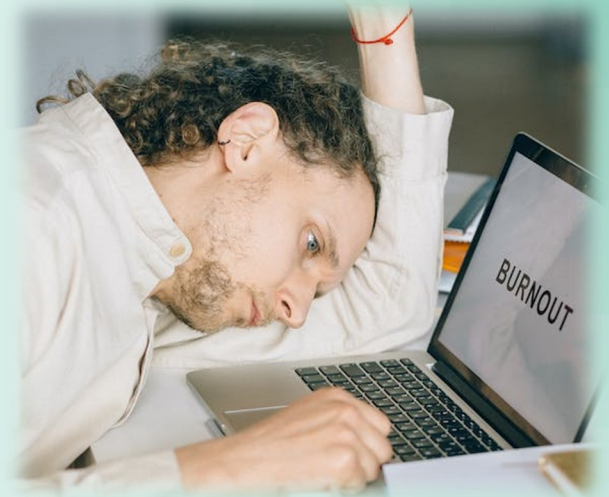
# Training Opportunities (listed by date)

## **The Cost of Caring: Compassion Fatigue**

**Tues., Mar. 26 / 6:30-8:30 / CCR&R / FREE**

**Robin Ridgely, U of I Extension Educator**

*Anyone in a childcare position can experience burnout or vicarious trauma, affecting our jobs, our families, and maybe even our clients in a negative way. Learning the signs, symptoms, and risk factors of both burnout and vicarious trauma, along with self-care strategies and a plan for resilience, can help us avoid compassion fatigue.*



*and attachment. We will also discuss the importance of touch, how to prepare the environment for massage, and practice massage techniques on provided baby dolls.*

## **Infant Massage Training For Teachers AND Families**

**(baby dolls will be provided for this session)**

**Thurs., Mar.28 / 6:00-8:00 / CCR&R / FREE**

**Jennifer Sykes, Family Support Specialist**

*Infant massage is a positive interaction between caregiver and infant/child that uses systematic manual manipulation of soft tissues of the body. We will learn about the many benefits of infant massage including how it improves relaxation and release of stress, how it can reduce discomfort due to teething, colic, or gas and how it can promote bonding and attachment. We will also discuss the importance of touch, how to prepare the environment for massage, and practice massage techniques on provided baby dolls.*

## **What Does Self-Compassion Have to Do With Self-Care?**

**Wed., April 10 / 6:00-8:00 / CCR&R / FREE**

**Mary Beth Long & Brittney Hale,**

**Creating Compassionate Communities**

*What if we gave ourselves the same kindness and care that we would give a good friend?*

*Research indicates that Self-Compassion is one of the most powerful sources of coping and resilience that we have available to us, radically improving our physical and emotional well-being. Learn how to understand the link between Self-Compassion and Self-Care and think about Self-Compassion as a practice.*



# Training Opportunities (listed by date)

## **Terrific Teachable Moments**

**Thurs., April 11 / 6:00-8:00 / CCR&R / FREE**

**Susan Sloop, U of I Extension Educator**

*Terrific Teachable Moments is a simple, activity-based teaching resource developed by University of Illinois Extension. Now available as an app on both Android™ and IOS™ smart devices, the program allows teachers, parents, and youth mentors to provide simple, hands-on learning experiences designed to help kids of all ages develop emotional awareness and make positive character choices. The app includes over 150 mini lessons and each can be done in under 10 minutes. Lessons are based on the 4-H Youth Development framework of experiential learning, which leads kids to participate in a short activity, reflect on the experience, and apply what they learn by connecting it to real-life situations. Join us to learn how to use this amazing resource right at your fingertips!*



## **Getting Ready for K: Math Skills**

**Tues., April 16 / 6:30-8:30 / CCR&R / FREE**

**Colleen McLaughlin, ECE Consultant**

*In 2023, The Southern Illinois Coalition for Children and Families shared a Kindergarten Readiness checklist throughout the region. Developed with the help of both local Pre-K and Kindergarten teachers, the checklist is designed to convey one consistent message about what skills are important when entering Kindergarten. We will dig into the checklist and discuss activities to improve these skills in a series of sessions. This session will focus on mathematics skills.*

## **Strengthening Your Village!**

### **For Teachers AND Families**

**Thurs., April 18 / 6:00-8:00 / CCR&R / FREE**

**Jennifer Sykes, Family Support Specialist**

*Join us for this special training for teachers AND families that focuses on the Five Protective Factors from the Strengthening Families Approach. Protective Factors are characteristics or strengths of individuals, families, or communities that reduce or eliminate risk. These attributes can help you navigate difficult situations, whether it be child development, supporting families or empowering caregivers and families to make the best choices for the children in their care.*





## Looking for online options?

Visit CCR&R's E-Academy on our website, where you can access workshop titles not found on the CCR&R calendar. CCR&R offers a variety of online workshops that you can do "on demand", 24 hours a day, seven days a week. The **first 10 hours are provided free of charge** to individuals who work at programs listed in the CCR&R database or for individual pursuing a family child care license.

**Online workshops are available to you 24 hours per day, seven days a week. You can take them at home and at work.**

You will need an internet connection, a good operating computer, and printer. Certificates for online workshops can be printed upon completion of the training.

These trainings must be **self-reported** in order for them to appear on your professional development record.

These courses are Gateways approved.



### See what some professionals say about CCEI Training

*"I love it.... I can do it on my own time, when I am ready."*

*"They're available at any time. I can take my time and really understand what I am learning."*

*"Many different subject areas are offered and you can do it in the comfort of your own home."*

## Get started NOW!

1. The FULL list of CCEI courses is available on their website <https://www.cceionline.com/>
2. Decide which workshops you want to take - write down the course name and course number
3. Contact Ashleigh Couty at [ashleighcouty@jalcd.edu](mailto:ashleighcouty@jalcd.edu) to register.

# Workforce Development Support



The Child Development Associate (CDA) Credential™

We know that finding qualified teachers is a concern . CCR&R implemented CDA Credential cohorts in 2019 to assist staff in attaining **Child Development Associate Credential (CDA)** which is one pathway for a person to be DCFS teacher qualified.

If you would like more information about the credential or the cohorts, contact ***Nina Wargel at CCR&R at 1-800-548-5563 Ext.1229***

To learn more about the CDA Credential, go to [www.cdacouncil.org](http://www.cdacouncil.org).



[illinoisworknet.com](http://illinoisworknet.com)

John A Logan College is now offering apprenticeships for students pursuing an early childhood education degree.

### **Apprenticeships are Win/Win/Win**

**#1—** *Apprentice* is PAID to work while in *college*

**#2—** *Employer* getting an employee/apprentice who they may/may not have to pay for out of pocket while in training\*\* Employer may be eligible for an Illinois state tax credit for up to \$3500/year/apprentice.

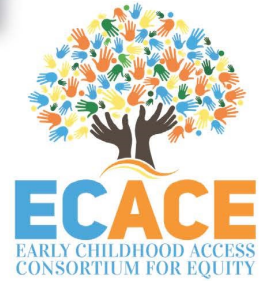
For more information contact Tammy Gwaltney at [Tammy.Gwaltney@jalc.edu](mailto:Tammy.Gwaltney@jalc.edu)

Are you working or have you ever worked in early childhood education? Are you interested in getting a degree or credential in the field?

**Then don't delay, check out the...**

**New This Year:  
Expanded Eligibility!**

# Early Childhood Access Consortium for Equity (ECACE) Scholarship



## Apply now for scholarships for the 2023-24 academic year!

ECACE scholarships are available for degrees or credentials in early childhood education and may cover **up to the total cost of attendance after other financial aid received – costs such as tuition and fees, transportation, room and board, and books and supplies.**

Scholarship eligibility criteria include:

- Currently working or having worked in positions such as teacher, assistant, or director in early childhood centers, schools, or homes.
- Enrollment or acceptance for enrollment on a full- or part-time basis at a participating institution in Illinois.
- Pursuing an associate, bachelor's, or master's degree in early childhood or an additional license or endorsement.

**Apply by August 7, 2023 for priority access to funding!**

### Learn more:

For more information, including full eligibility criteria, a list of participating institutions, and to apply, visit [www.isac.org/ECACEscholarship](http://www.isac.org/ECACEscholarship)

### Questions? Need assistance? Contact:

Kathleen Riggs, CCR&R Higher Education Navigator  
[kathleenriggs@jalc.edu](mailto:kathleenriggs@jalc.edu)

618-440-0131 or 800-548-5563 ext. 1238





# Take Charge of your Professional Development

**How can you ensure that the seminar/conference/workshop you register for will benefit your professional development? Try asking yourself these questions beforehand:**

- **Do you have any “gaps” in your professional development that need to be filled?**  
*Some possible examples are that you need to fulfill your inclusion training hours, or need more hours toward a certification or advanced degree.*
- **Does the training count toward a Gateways Credential?**  
*If you are interested, inquire with the event planner and/or look on the Gateways Statewide Online Training Calendar to see if the training shows a gold-colored rectangle. You can check the search box on the online training calendar to see if the training may meet the requirements for a Gateways Credential.  
<https://registry.ilgateways.com/be-a-member/find-trainings>*
- **Does the training count toward CEUs or PDUs?**  
*Check with the event organizer to see if the training has been approved for these credit options.*
- **Is there a specific new skill you are interested in learning?**  
*For example, do you want to learn how to design a PowerPoint presentation, Enrich your science area, Improve observation skills? etc.*
- **What level of training are you seeking? Introductory, Intermediate or Advanced?**  
*You may be advanced in your knowledge of child development but need a beginner class on accounting skills or documentation.*
- **Do you want to participate in ExceleRate® Illinois approved trainings?**  
*As you pursue an ExceleRate Circle of Quality, several resources are available to guide your professional development planning efforts in an effort to meet participation requirements. Refer to the ExceleRate Illinois Required Training Grids for Licensed Family Child Care or Licensed Child Care Centers at <http://www.exceleRateillinoisproviders.com/resources/helpful-links> or search “approved for ExceleRate” on the Statewide Training Calendar <https://registry.ilgateways.com/be-a-member/find-trainings>*
- **Is the content focus for family child care, centers, infant/toddler, 3-5 or school-age/youth development?**  
*Look on the Gateways Statewide Online Training Calendar using one as your keyword.  
<https://registry.ilgateways.com/be-a-member/find-trainings>*
- **What outcomes are you seeking? Is the training applicable to your needs?**
- **Will your individual learning style be addressed? What various methods for learning are used?**
- **Is the location and time a good fit for you?**



1226 Towanda Plaza | Bloomington, Illinois 61701 | (866) 697-8278 | [www.ilgateways.com](http://www.ilgateways.com)

Gateways to Opportunity is administered through Inccrra and funded by the Illinois Department of Human Services Bureau of Child Care and Development and the McCormick Foundation. Gateways to Opportunity, the arch logo and Illinois Professional Development System are registered trademarks of Inccrra.

# ExceleRate® Illinois Training Bundles for Credential Credit

There are a variety of trainings that Administrators and teaching staff are required to complete for ExceleRate Illinois. The following related and required trainings have been bundled together to count towards designated Gateways Credentials. When the outlined combination of trainings are completed, (as noted) they may be applied toward an applicant's Gateways Credential. Most of these trainings are available at <http://courses.inccrra.org>.

To see if you may have already completed a bundle of these trainings, or to see how close to completing a bundle you are, visit your Professional Development Record through the Gateways Registry at [registry.ilgateways.com](http://registry.ilgateways.com).

## ExceleRate Bundle

- *ExceleRate® Illinois Orientation*
- *Understanding and Planning for Continuous Quality Improvement*
- *Creating Individual Professional Development Plans*

### Credential

Personal and Professional Development (PPD) ECE Credential – **OR** –  
Personal and Professional Self-Awareness (PPS) Illinois Director Credential

## ExceleRate Bundle

- *Illinois Early Learning and Development Standards*
- *Illinois Early Learning Guidelines OR Finding a Curriculum that Works for You*
- *Introduction to Developmental Screening Tools*
- *Fundamentals of Child Assessment*

### Credential

Observation and Assessment (OA) AND Curriculum or Program Design (CPD) ECE Credential – **OR** –  
Observation and Assessment (OA) AND Educational Programming (EP) Illinois Director Credential

## ExceleRate Bundle

- *Family and Community: Partners in Learning*
- *An Introduction to Transitions*
- *Basics of Culturally and Linguistically Appropriate Practices*

### Credential

Family and Community Relationships (FCR) ECE Credential – **OR** –  
Family Partnerships (FP) Illinois Director Credential

## ExceleRate Bundle

- *Getting Ready for the PAS*
- *Introduction to the ERS*

### Credential

Curriculum and Program Design (CPD) ECE Credential – **OR** –  
Educational Programming (EP) Illinois Director Credential

\*Each training may only be counted ONCE toward credential credit across any/all combinations of training bundles.

\*Welcoming Each and Every Child, at 7 hours currently counts toward the ECE and IDC.



1226 Towanda Plaza | Bloomington, Illinois 61701 | p. 866.697.8278 | f. 309.828.1808 | [www.ilgateways.com](http://www.ilgateways.com) | [www.exceleRateillinois.com](http://www.exceleRateillinois.com)



# Library for Social & Emotional Learning

Located at CCR&R, Carterville



Find our catalogue via QRS code or link!

<https://tinyurl.com/Library4SEL>

The Library was provided by a grant by the Illinois Children's Healthcare Foundation through the Building Compassionate Communities Grant held by



CENTERSTONE

Our Partners Include



## What?

- Conscious Discipline Materials
- Puzzles and Games
- Story Kits

## Who?

- Any ECEC Provider
- Must work in SDA 16
- Signed lending agreement required

## How?

- Pick your items from the catalogue.
- Contact CCR&R to check out

618-985-5975

or

CCR&R@JALC.edu

# Technical Assistance & On-Site Support

CCR&R has a team of trained specialists available to provide technical assistance to early childhood professionals. From environments and curriculum, to staffing and management, our specialists can lend a hand. We are happy to help you meet or maintain any quality improvement goals you may have.

**Help is just a call or a click away!**

**Call 1-800-548-5563**

**Quality Specialist**

*Nina Wargel*

*Ext. 1229*

*ninawargel@jalc.edu*

**Infant Toddler Child Care Specialist**

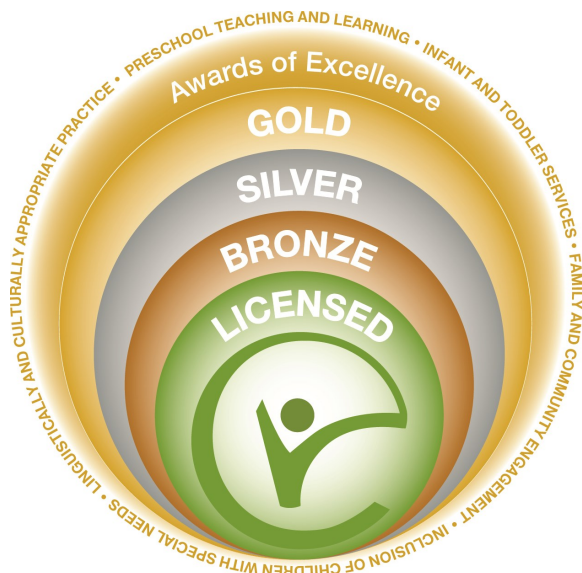
*Chrissy Confer*

*Ext. 1242*

*chrissyconfer@jalc.edu*

*"The most efficient and effective route to bold change is the participation of everyone, everyday in incremental change."*

*~Tom Peters*



*As an early learning and development program, you play a pivotal role in giving our state's youngest children the best start in life. ExceleRate™ Illinois can help you make quality your top priority and prepare children for success in school and in life.*

*ExceleRate™ Illinois is a comprehensive system that includes, licensed child care centers, Preschool for All programs, Head Start programs, and licensed family child care homes.*

*Visit [www.excelerateillinoisproviders.com](http://www.excelerateillinoisproviders.com) to learn more.*

WOULD YOU  
LIKE TO  
**Earn \$**  
WHILE YOU  
WORK FROM HOME?



## Become a Family Child Care Provider

There is a shortage of quality child care in your area for children and parents working outside of their homes.



Click this QR code or  
call for more  
information:  
**1-800-548-5563**